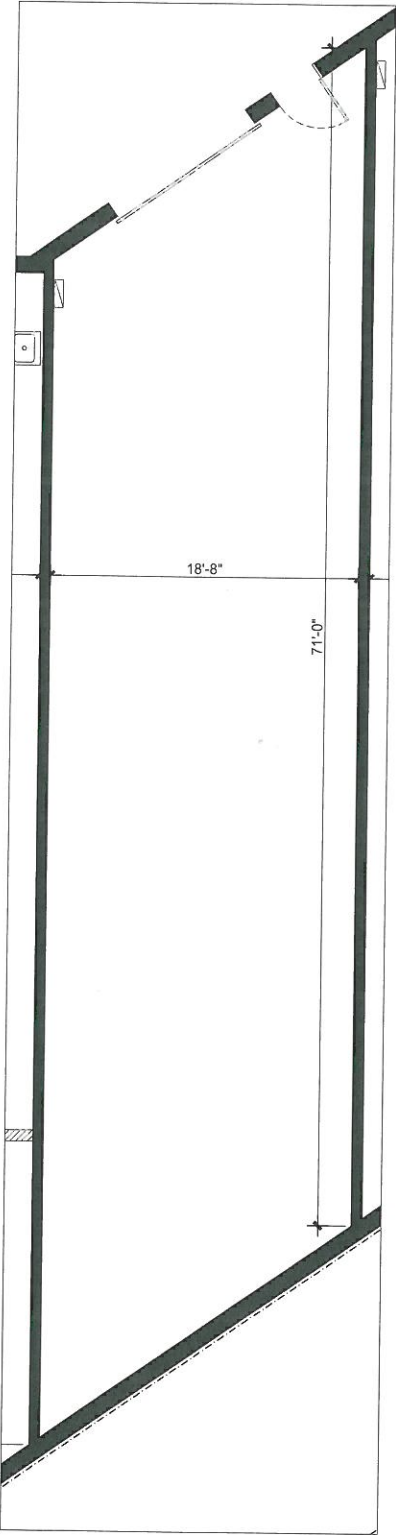


WPRA. LTD - LANDLORD
400 WEST COMSTOCK AVE.- UNIT "G6"
WINTER PARK, FL 32789
GROUND FLOOR PLAN
1421 SQ.FT. GROSS
1439 SQ.FT. RENTABLE



GROUND FLOOR - UNIT "G6"

Handwritten signature in blue ink.