

REVISION SCHEDULE		
#	DESCRIPTION	DATE
	PERMIT SET	03/15/17
2	DR. & WDW. SCH.	07/19/17
6	OWNER REVISIONS	02/18/20
7	OWNER REVISIONS	09/01/20

SLOCUM PLATTS ARCHITECTS, P.A.

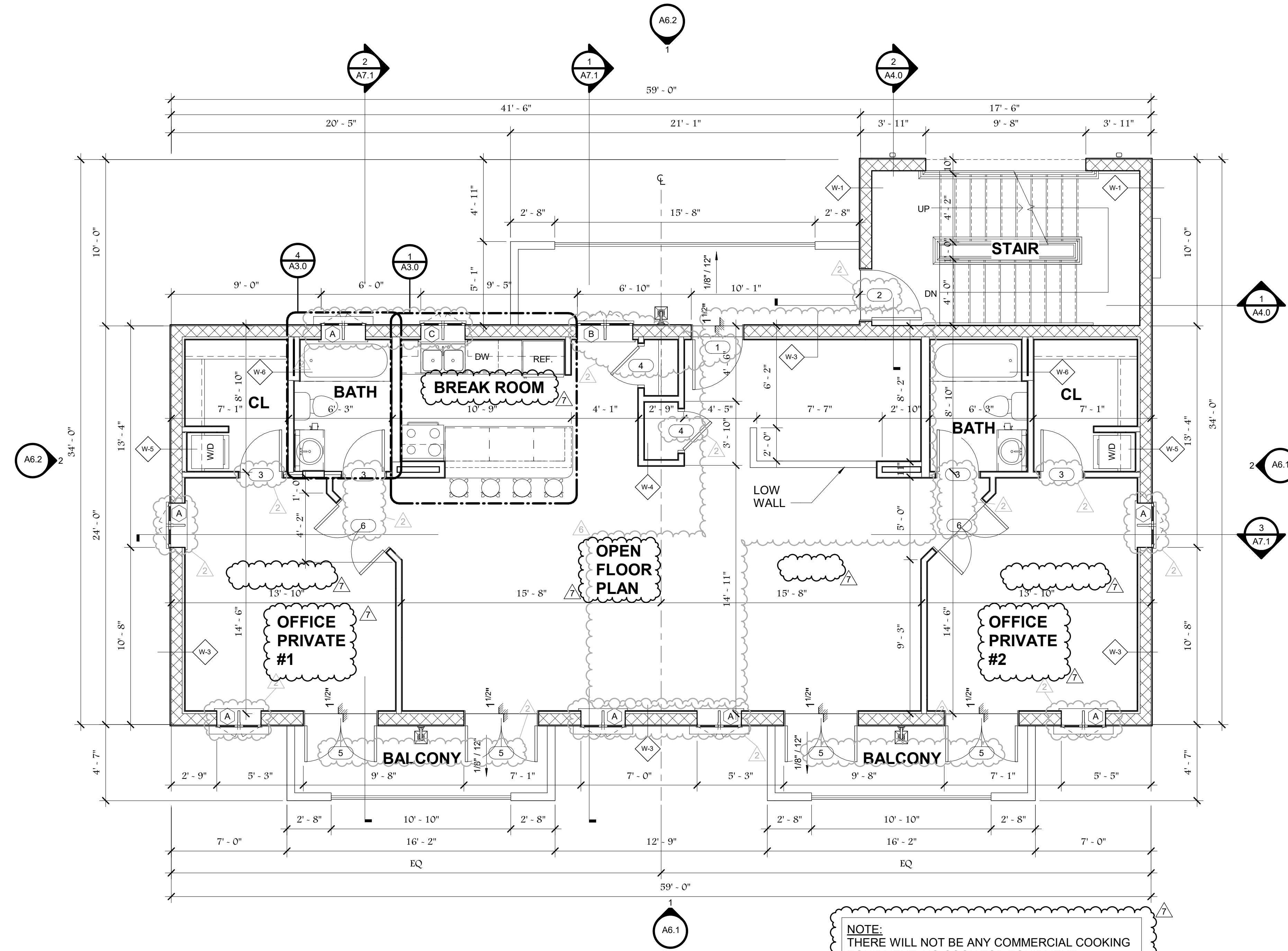
RANDALL J. SLOCUM AR 13350 WILLIAM P. PLATTS AR 13262
 670 NORTH ORLANDO AVENUE, SUITE 1001, MAITLAND FL 32751
 TEL: (407) 645-3019 FAX: (407) 645-2771
 WWW: SLOCUMPLATTS.COM



WILLIAM P. PLATTS AR13262

BLDG PLAN - 2ND FLOOR
226 HANNIBAL SQUARE EAST
 WINTER PARK, FL 32789

DRAWN	Author
CHECKED	Checker
DATE	03/15/17
SCALE	1/4" = 1'-0"
JOB NO.	16-055
SHEET	A2.1b



1 2ND FLR PLN
 1/4" = 1'-0"

NOTE:
 SEE SHEET A1.0b FOR WALL TYPES, ROOF AND FLOOR ASSEMBLIES

THE DRAWING IS THE EXCLUSIVE PROPERTY OF SLOCUM PLATTS ARCHITECTS, P.A. THE COMPANY EXPRESSLY RESERVES THE COPYRIGHT AND ALL OTHER PROPERTY RIGHTS IN THESE PLANS AND ELEVATIONS. ANY REPRODUCTIONS, REVISIONS, OR MODIFICATIONS OF THESE DOCUMENTS WITHOUT THE EXPRESS WRITTEN CONSENT OF SLOCUM PLATTS ARCHITECTS, P.A. IS PROHIBITED BY LAW.