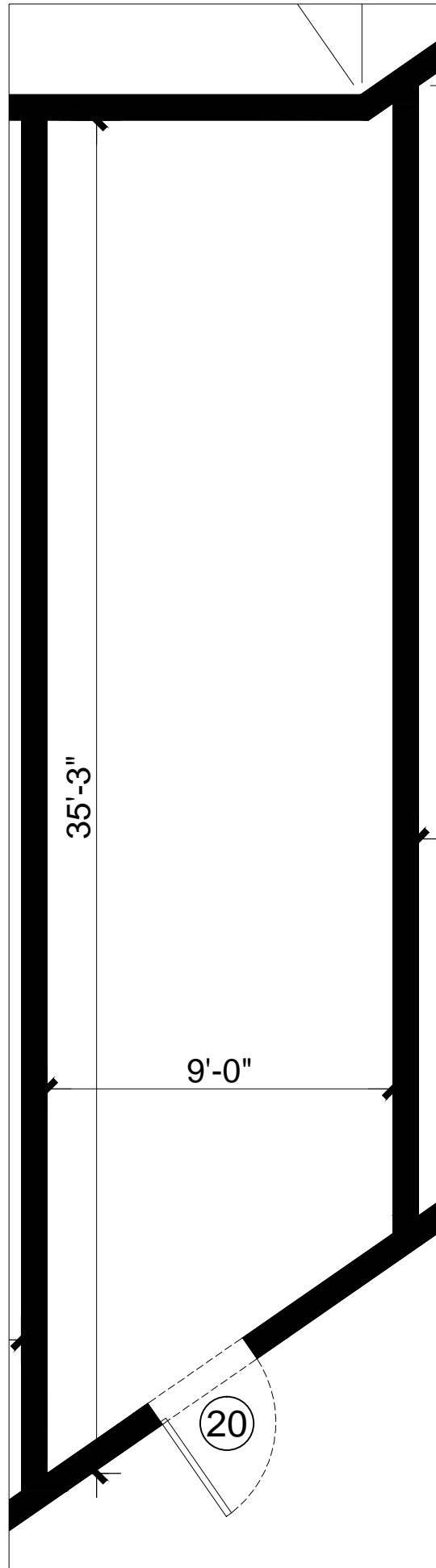


WPRA. LTD - LANDLORD  
400 WEST COMSTOCK AVE. - UNIT "20"  
WINTER PARK, FL 32789  
SECOND FLOOR - STORAGE UNIT  
324 SQ.FT. GROSS  
438 SQ. FT. RENTABLE



SECOND FLOOR - UNIT "20"