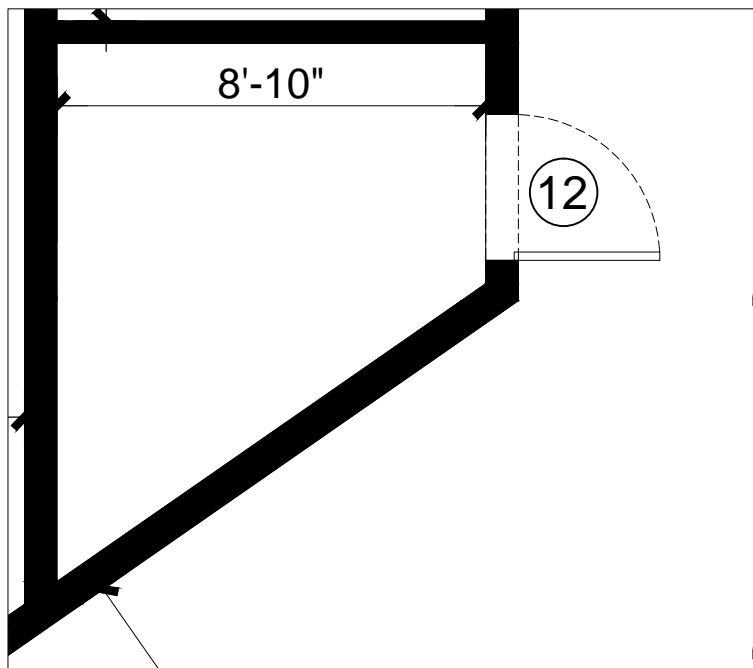


WPRA. LTD - LANDLORD  
400 WEST COMSTOCK AVE. - UNIT "12"  
WINTER PARK, FL 32789  
SECOND FLOOR - STORAGE UNIT  
88 SQ.FT. GROSS  
119 SQ. FT. RENTABLE



SECOND FLOOR - UNIT "12"